



ON DEMAND
ON PREMISE
ON ANY CLOUD

BUSINESS TO BUSINESS EDI

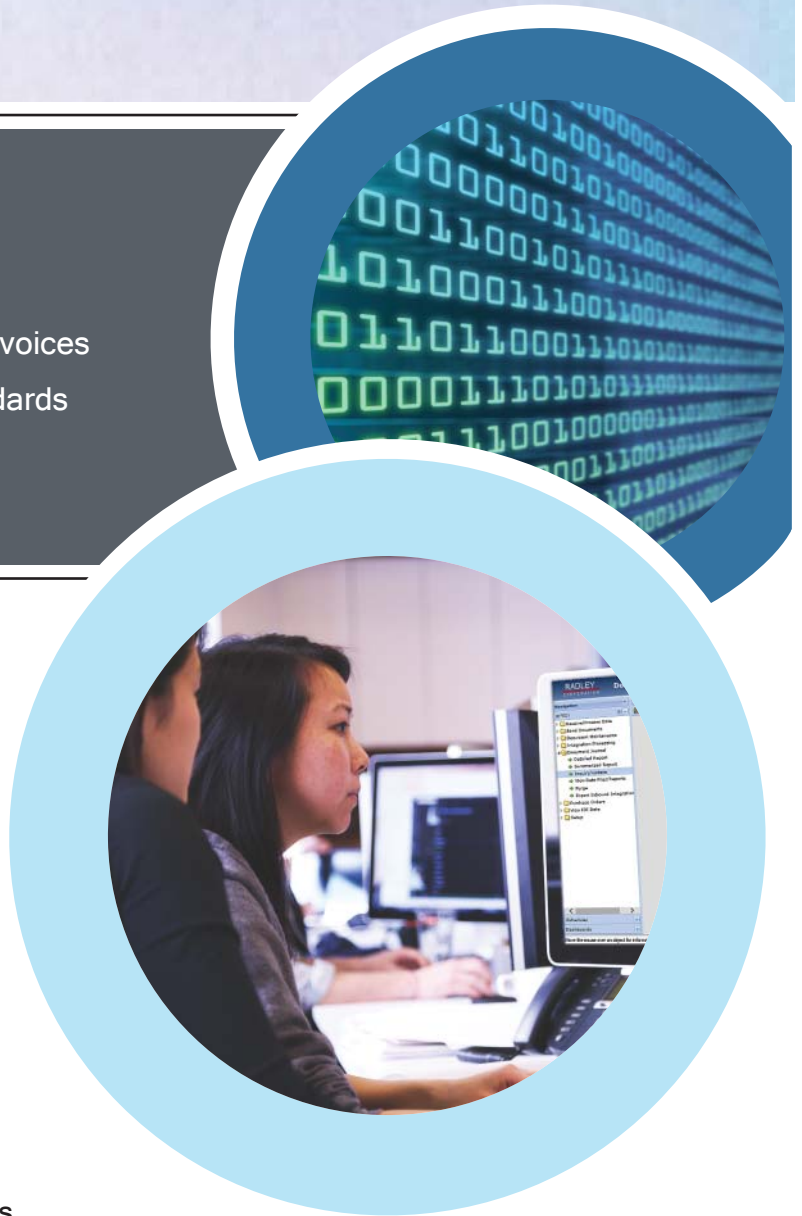
- ✓ Eliminate redundancy and reduce costs
- ✓ Minimize IT involvement in EDI activities
- ✓ Integrate inbound and outbound transactions
- ✓ Eliminate manual entry of orders, ASNs, and invoices
- ✓ Meet customer requirements and industry standards
- ✓ Compliance to trading partner requirements
- ✓ Job history queries and reporting

Automate & Streamline Business Processes

**Anything-to-anything communications,
translation, and preconfigured mapping
for all trading partners**

Thanks to the rapid evolution of technology, EDI is here to stay. Recognized and accepted as the most efficient way of conducting business globally, EDI is seldom used to its full potential.

By simply integrating to Order Entry and other business systems, EDI is transformed from a customer-required necessity into a valuable business tool. Integrating EDI brings transparency and traceability to your business processes, saves time and personnel, and helps you build stronger, more productive relationships with both your customers and suppliers.



RADLEY
CORPORATION

Feature-Rich, Secure & Easy-to-Use

As a next generation EDI solution for B2B automation, iR*EDI (pronounced I Ready) is feature rich, robust and secure. iR*EDI leverages Radley's extensive experience to enhance ease of use and the operational efficiencies of day-to-day EDI operations and business process management. Free up precious IT resources from EDI tasks—Radley's knowledgeable staff can economically map, test and certify your customer's EDI specifications. Don't worry about EDI jargon, technical specifications and the distractions of dealing with EDI on your own. An iR*EDI implementation is simple and quick. Perhaps it's time to use EDI to its full potential as a productivity tool that works for you.

Operate Efficiently

Increase operational efficiency when you view up-to-the-minute graphical displays of your EDI operations and key performance indicators with Radley's Business Activity Monitor (BAM). This powerful dashboard tool includes preconfigured displays and is a must for customer service, production planning and shipping personnel. View customer EDI demand as it arrives. Drill into EDI transaction detail. Monitor transaction volumes. Receive alert notifications for important actionable activities such as communications problems or ASNs with missing data.

Automate Daily EDI Processes

Unattended job scheduling and monitoring with built-in email alert notification frees up valuable time of skilled workers for more productive activities. By automating your EDI business processes, you increase accuracy, save time, and gain a competitive advantage.

Integrate Demand

Optimize workflows with configurable user processes. iR*EDI automates your business process using standard, supported, integration gateways.

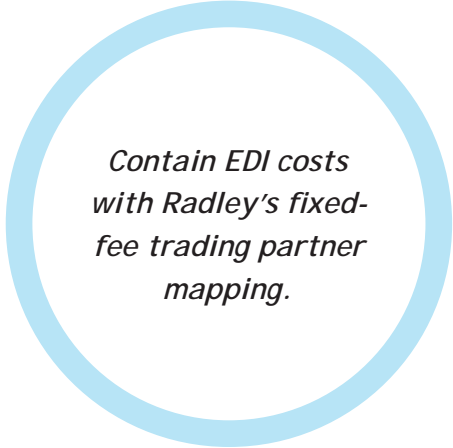
Purchase Orders & Outbound Documents

Store all inbound PO data so that elements not stored in the business system can be retrieved and returned on outbound documents. Import outbound documents like ship notices, invoices, and PO acknowledgements from your business system and automatically transmit them to your trading partner.

Elevates EDI

iR*EDI's built-in error proofing of inbound and outbound documents is sure to improve your overall productivity. Error correction is easy with intuitive web forms that conform to your trading partners' specifications. All processing audit logs and EDI transactions are available in user-friendly PDF format. Archiving documents has never been easier:

- Reconcile Acknowledgement and Application Advice transactions with the originating document
- Link all import/export files for complete document life cycle management
- Link all associated reports for quick, easy, problem resolution



*Contain EDI costs
with Radley's fixed-
fee trading partner
mapping.*

Ready to Use EDI

- Lower Total Cost of Ownership
- Complete EDI Platform
- Easy Implementation
- Best-in-Class Support
- Continuous Operation

Integrated Mapping, Scheduling & Document Archiving

Fixed-fee Mapping

- Contain EDI costs with Radley's fixed-fee trading partner mapping, certification and annual maintenance services. Protect your EDI budget from hourly consulting charges.
- Maintaining compliance with EDI specifications requires detailed knowledge and experience that is often beyond the resources of many IT staffs. Radley's staff provides dedicated, knowledgeable support for your EDI environment.

iScheduler

- Schedule recurring execution of EDI functions by time and day of the week with frequency controls
- Email EDI job notifications to users based on transmission status or job completion

Document Journal

- Transaction Archives: maintain easy access to all corresponding transactions received and sent, transaction reports and integration files
- Transaction Reprocessing: any transaction may be reprocessed or retransmitted

Technical Requirements

On-Premise

Server Requirements:

- Windows 2012 R2. This server will be configured to your network.
- Recommended Minimum Memory on server: 8GB
- Recommended disk space on server: 750MB + 100MB times the number of company databases
- Recommended Minimum Processor Speed: Multi-core CPU 2 GHZ

Client Requirements:

- Microsoft Internet Explorer 7 or higher
- Adobe Acrobat Reader or other PDF reader
- Microsoft Excel 2003 or higher (required if using spreadsheets)

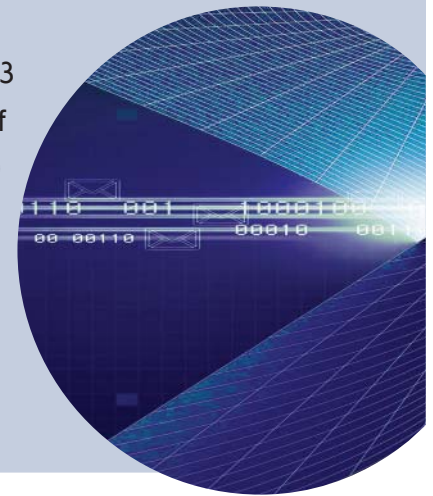
On-Demand

Client Requirements:

- Microsoft Internet Explorer 7 or higher
- Adobe Acrobat Reader, or other PDF reader
- Microsoft Excel 2003 or higher (required if using spreadsheets)

On Any Cloud

- Same server and client requirements as On-Premise



- ✓ Guaranteed trading partner compliance
- ✓ Role-based access to application functions
- ✓ All EDI documents, logs, reports & integration files may be archived
- ✓ Support for all major EDI standards, plus XML, CSV and proprietary data formats
- ✓ Translate any formatted document into any other format for true anything-to-anything data translation

Radley EDI Solutions Platform

Other EDI Productivity Solutions from Radley Corporation



iSC Supply Chain Collaboration

If you are using EDI with your customers, isn't it time to use EDI or a web-based solution with your suppliers? The latest technological advances have enabled us to create iSC, a web-based solution that is affordable and easy to use. The iSC Solution minimizes EDI support overhead and provides an easy solution for electronic communication with your suppliers.



iCARaS Automotive Demand Management

Radley is the industry expert in automotive EDI. The iCARaS component of our eCommerce Platform will supercharge your EDI translation with complete automotive functionality from CUM management to serialized AIAG labels and ASNs.



BAM The Business Activity Monitor for Metrics that Matter

Radley BAM Dashboards provide visual intelligence for daily operations that will help you quickly identify problems and inefficiencies. Make decisions with confidence by having actionable information from all your enterprise applications at your finger tips.

Training & Support

Knowledgeable and confident workers improve productivity and maximize your investment. For more information about available service, support and training options, call 248-559-6858.

EMS EDI Managed Services

Focus on what you do best and leave EDI to Radley! Our experienced EDI analysts leverage the latest B2B eCommerce technology to remotely manage your business processes after developing a plan personalized to meet your unique needs and budget.

VAN Services Value Added Network (VAN)

Cost savings, Radley's superb standard support service and easy migration! Isn't it time to reduce your EDI communications overhead?

Ask us about our Supply Chain Solutions

Automated Solutions that go way beyond just barcodes!

Radley Corporation

23077 Greenfield, Suite 440

Southfield, MI 48075

Email: contactus@radley.com

www.radley.com/iREDloverview.htm

Tel: 616.541.6010

Fax: 616.554.9008



www.facebook.com/RadleyCorporation



www.linkedin.com/company/radley-corporation



www.twitter.com/RadleySolutions



www.youtube.com/user/RadleyCorporation